

Owensboro, KY

270.684.4202

Russellville, KY

270.725.8948

Greensburg, IN

812.222.1220

Mt. Vernon, IL

618.847.0283



A DIVISION OF DEN HARTOG INDUSTRIES, INC.

### Vertical Bulk Storage

Vertical Tanks are free standing with a flat bottom for indoor or outdoor installations. Tanks are manufactured from medium or high-density polyethylene with U.V. Inhibitors. Tank walls are translucent (depending on color) for level viewing and equipped with gallon indicators.



PART#	CAPACITY	DIMENSIONS (Diameter x Height)	LID	FITTING
+VT0010-12	10 Gallon	12 x 25	8"	3/4"
+VT0020-16	20 Gallon	16 x 28	8"	3/4"
+VT0025-18	25 Gallon	18 x 30	5"	3/4"
+VT0040-18	40 Gallon	18 x 43	5"	3/4"
+VT0055-20	55 Gallon	20 x 47	5"	1"
+VT0065-23	65 Gallon	23 x 42	5"	1"
*+VT0075-23	75 Gallon	23 x 50	7"	1"
*+VT0100-28	100 Gallon	28 x 45	7"	1"
*+VT0105-23	105 Gallon	23 x 65	7"	1"
VT0110-32	110 Gallon	32 x 41	5"	2" Top
*VT0130-32	130 Gallon	32 x 46	8"	1"
VT0135-23	135 Gallon	23 x 82	16"	1"
*VT0135-28	135 Gallon	28 x 59	8"	1"
*VT0160-28	160 Gallon	28 x 68	8"	1"
*VT0175-31	175 Gallon	31 x 61	8"	1 1/2"
*VT0180-40	180 Gallon	40 x 45	5"	2" Top
*VT0210-40	210 Gallon	40 x 49	5"	2" Top
*VT0225-31	225 Gallon	31 x 76	8"	1 1/2"
*VT0265-31	265 Gallon	31 x 88	8"	1 1/2"
*VT0295-42	295 Gallon	42 x 55	16"	2"
*VT0300-35	300 Gallon	35 x 81	8"	2"
VT0300-42	300 Gallon	42 x 55	8"	2"
VT0405-52	405 Gallon	52 x 48	8"	2"
*VT0420-42	420 Gallon	42 x 75	16"	2"
VT0425-42	425 Gallon	42 x 75	8"	2"
*VT0500-46	500 Gallon	46 x 77	8"	2"
VT0505-46	505 Gallon	46 x 80	16"	2"
VT0550-52	550 Gallon	52 x 66	8"	2"
VT0600-46	600 Gallon	46 x 91	16"	2"
VT0625-64	625 Gallon	64 x 50	8"	2"
VT0800-46	800 Gallon	46 x 118	16"	2"
*VT0850-54	850 Gallon	54 x 94	8"	2"
VT0900-46	900 Gallon	46 x 132	16"	2"
VT1000-64	1000 Gallon	64 x 81	16"	2"

Siphon Tube included with Tanks 300 Gallons or Greater

PART#	CAPACITY	DIMENSIONS (Diameter x Height)	LID	FITTING
VT1050-86	1050 Gallon	86 x 54	16"	2"
VT1200-64	1200 Gallon	64 x 97	16"	2"
VT1350-86	1350 Gallon	86 x 65	16"	2"
VT1500-64	1500 Gallon	64 x 115	16"	2"
VT1500-86	1500 Gallon	86 x 69	16"	2"
VT1525-64	1525 Gallon	64 x 122	16"	2"
VT1650-86	1650 Gallon	86 x 74	16"	2"
VT2000-64	2000 Gallon	64 x 156	16"	2"
VT2000-90	2000 Gallon	91 x 84	16"	2"
VT2050-86	2050 Gallon	86 x 93	16"	2"
VT2150-102	2150 Gallon	102 x 71	16"	2"
VT2500-90	2500 Gallon	91 x 103	16"	2"
VT3000-90	3000 Gallon	91 x 120	16"	2"
VT3100-102	3100 Gallon	102 x 103	16"	2"
VT3400-102	3400 Gallon	102 x 107	16"	2"
VT4000-96	4000 Gallon	96 x 140	16"	2"
VT4200-96	4200 Gallon	96 x 148	16"	2"
VT4995-142	4995 Gallon	142 x 90	16"	3"
VT5000-102	5000 Gallon	102 x 156	16"	3"
VT5150-102	5150 Gallon	102 x 161	16"	3"
VT6250-102	6250 Gallon	102 x 194	16"	3"
VT6500-120	6500 Gallon	120 x 152	16"	3"
VT7000-142	7000 Gallon	142 x 125	16"	3"
VT7800-120	7800 Gallon	120 x 176	16"	3"
VT8000-120	8000 Gallon	120 x 180	16"	3"
VT9000-142	9000 Gallon	142 x 154	16"	3"
VT9150-120	9150 Gallon	120 x 203	16"	3"
VT9500-120	9500 Gallon	120 x 213	16"	3"
VT10500-2500	10500 Gallon	142 x 177	16"	3"
VT10500-2800	10500 Gallon	142 x 177	16"	3"
VT12500-142	12500 Gallon	142 x 208	16"	3"
VT15500-142	15500 Gallon	142 x 247	16"	3"

\*Indicates tank has a flat top instead of a dome top

+Can ship via UPS/FedEx

Tanks

Call for Pricing



21

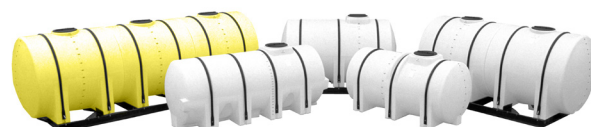
PART#	CAPACITY	HOOPS PART #	DIMENSIONS (W x L x H)	LID	FITTING
+FM0015-14s	15 Gallon	N/A	14 x 30	5"	N/A
+FM0025-16s	25 Gallon	N/A	16 x 34	5"	N/A
+FS0035-18	35 Gallon	N/A	18 x 34	5"	1"
+FS0065-24	65 Gallon	N/A	24 x 39	5"	1"
+FS0070-24	70 Gallon	N/A	24 x 39	5"	1"
FS0125-32	125 Gallon	N/A	32 x 40	8"	1"
FS0165-32	165 Gallon	N/A	32 x 54	8"	1"
FS0225-38	225 Gallon	N/A	38 x 52	8"	2"
FS0325-38	325 Gallon	N/A	38 x 72	12"	2"
FS0335-44	335 Gallon	N/A	44 x 56	16"	2"
FS0510-57	510 Gallon	FS0510-HP (Set of 3)	57 x 80 x 39	16"	2"
FS0535-48	535 Gallon	N/A	48 x 78	16"	2"
FS0735-48	735 Gallon	FS048-HP (Set of 3)	48 x 103	16"	2"
FM0925-DS	925 Gallon	FS062-HP-925 (Set of 2)	62 x 81	16"	2"
FS0925-DW	925 Gallon	FS062-HP-925 (Set of 2)	62 x 81	16"	2"
FS1005-48	1005 Gallon	FS1005-HP (Set of 4)	48 x 130	16"	2"
FM1010-48	1010 Gallon	FM1010-HP (Set of 4)	48 x 130	16"	2"
FS1035-78	1035 Gallon	FS1035-HP (Set of 3)	78 x 90 x 52	16"	2"
FM1065-56S	1065 Gallon	FS1065-HP (Set of 3)	56 x 105	16"	2"
FS1065-56W	1065 Gallon	FS1065-HP (Set of 3)	56 x 105	16"	2"
FM1300-DS	1300 Gallon	FS062-HP-1300 (Set of 3)	62 x 114	16"	2"
FS1300-DW	1300 Gallon	FS062-HP-1300 (Set of 3)	62 x 114	16"	2"
FS1610-78	1610 Gallon	FS1610-HP (Set of 4)	78 x 139 x 58	16"	2"
FM1610-78S	1610 Gallon	FM1610-HP (Set of 4)	78 x 139 x 58	16"	2"
FM1750-62S	1750 Gallon	FS062-HP-1750 (Set of 4)	62 x 147	16"	2"
FS1750-62W	1750 Gallon	FS062-HP-1750 (Set of 4)	62 x 147	16"	2"
FM1800-2S	1800 Gallon	FS062-HP-1800C (Set of 4)	62 x 149	16"	2"
FS1800-2W	1800 Gallon	FS062-HP-1800C (Set of 4)	62 x 149	16"	2"
FS1850-78	1850 Gallon	FS1850-HP (Set of 4)	78 x 139 x 63	16"	2"
FM1850-78S	1850 Gallon	FM1850-HP (Set of 4)	78 x 139 x 67	16"	2"
FS2350-88	2350 Gallon	FS2350-HP (Set of 4)	88 x 146 x 63	16"	2"
FM2350-88s	2350 Gallon	FM2350-HP (Set of 4)	88 x 146 x 63	16"	2"
FM2600-2S	2600 Gallon	FS062-HP-2600C (Set of 6)	62 x 212	16"	2"
FS2600-2W	2600 Gallon	FS062-HP-2600C	62 x 212	16"	2"
FS2750-88	2750 Gallon	FS2750-HP	88 x 146 x 70	16"	2"
FM2750-88S	2750 Gallon	FS2750-HP	88 x 146 x 70	16"	2"
FM3200-2S	3200 Gallon	FM3200-HP	88 x 172 x 74	16"	2"
FS3250-88	3250 Gallon	FS3250-HP	88 x 146 x 79	16"	3"
FM3250-88S	3250 Gallon	FS3250-HP	88 x 146 x 79	16"	3"
FS3750-88	3750 Gallon	FS3750-HP	88 x 146 x 91	16"	3"
FM3750-88S	3750 Gallon	FS3750-HP	88 x 146 x 91	16"	3"
FS4250-88	4250 Gallon	FS4250-HP	88 x 101 x 146	16"	3"
FM4250-88S	4250 Gallon	FS4250-HP	88 x 101 x 146	16"	3"

FMxxxx-S= Sump FSxxxx-W= Without Sump D= Domed End +Can ship via UPS/FedEx

- Tanks purchased without hoops void warranty
- Tanks larger than 1610 gallons include baffles
- All FM tanks require a skid
- Sump, baffle, and ladder options available upon request

## Free-Standing Horizontal Bulk Storage Tanks

Free Standing Tanks are selected when transportable containment is required for indoor or outdoor applications. Tanks are equipped with molded-in legs to support the tank and band locators for tie down. Tanks are manufactured from medium or high-density polyethylene with U.V. Inhibitors and designed for containment of liquids up to 1.7 specific gravity. Tank walls are translucent (depending on color) for level viewing and equipped with gallon indicators.



Owensboro, KY

270.684.4202

Russellville, KY

270.725.8948

Greensburg, IN

812.222.1220

Mt. Vernon, IL

618.847.0283



PART#	CAPACITY	DIMENSIONS (W x L x H)	CRADLE PART # (INCLUDES BANDS)	LID	FITTING
HE0085-36	85 Gallon	36 x 47 x 21	HE0085-C	7"	N/A
HE0200-41	200 Gallon	41 x 66 x 26	HE0200-C	8"	3/4" & 1 1/4"
HE0300-48	300 Gallon	48 x 70 x 30	HE0300-C	8"	3/4" & 1 1/4"
HE0400-57	400 Gallon	57 x 70 x 36	HE0400-C	8"	3/4" & 1 1/4"
HE0500-57	500 Gallon	57 x 82 x 36	HE0500-C	8"	3/4" & 1 1/4"
HED0500-57	500 Gallon (8.5")	57 x 82 x 36	HE0500-C	8"	3/4" & 1 1/4"
HE0600-64	600 Gallon	64 x 84 x 39	HE0600-C	16"	3/4" & 1 1/4"
HE0750-69	750 Gallon	69 x 89 x 42	HE0750-C	16"	1 1/4" & 2"
HED0750-69	750 Gallon (8.5")	69 x 89 x 42	HE0750-C	16"	1 1/4" & 2"
HE0850-69	850 Gallon	69 x 89 x 46	HE0850-C	16"	1 1/4" & 2"
HED0850-69	850 Gallon (8.5")	69 x 89 x 46	HE0850-C	16"	1 1/4" & 2"
HE1000-78	1000 Gallon	78 x 90 x 49	HE1000-C	16"	1 1/4" & 2"
HED1000-78	1000 Gallon (8.5")	78 x 90 x 49	HE1000-C	16"	1 1/4" & 2"
HE1250-78	1250 Gallon	78 x 92 x 60	HE1250-C	16"	1 1/4" & 2"
HED1250-78	1250 Gallon (8.5")	78 x 92 x 60	HE1250-C	16"	1 1/4" & 2"
HE1600-78	1600 Gallon	78 x 138 x 49	HE1600-C	16"	2"
HED1600-78	1600 Gallon (6")	78 x 138 x 49	HE1600-C	16"	2"
+HZ0025-23	25 Gallon	22 x 33	+HZ0025-C	5"	3/4"
+HZ0055-23	55 Gallon	23 x 38	+HZ0055-C	5"	3/4"
+HZ0075-24	75 Gallon	24 x 47	+HZ0075-C	5"	3/4"
+HZ0095-24	95 Gallon	24 x 56	+HZ0095-C	5"	1 1/4"
HZ0100-23	100 Gallon	23 x 64	+HZ0100-C	5"	1 1/4"
HZ0110-30	110 Gallon	30 x 44	+HZ0110-C	8"	1 1/4"
HZ0150-30	150 Gallon	30 x 57	+HZ0153-C	8"	3/4" & 1 1/4"
HZ0150-32	150 Gallon	32 x 52	HZ0150-C	8"	3/4" & 1 1/4"
HZ0200-32	200 Gallon	32 x 68	HZ0232-C	8"	3/4" & 1 1/4"
HZ0200-38	200 Gallon	38 x 51	HZ0238-C	8"	3/4" & 1 1/4"
HZ0300-38	300 Gallon	38 x 76	HZ0300-C	8"	3/4" & 1 1/4"
HZ0400-42	400 Gallon	42 x 76	HZ0400-C	8"	3/4" & 1 1/4"
HZ0500-48	500 Gallon	48 x 79	HZ0500-C	8"	3/4" & 1 1/4"

HE=Elliptical HED=Elliptical with Deep Sump HZ=Round

- Baffle system standard in 1250 gallons and greater
- Sump and baffle options available upon request
- +Can ship via UPS/FedEx

### Round Horizontal Tanks

Round Horizontal Tanks are selected when transportable containment is required for indoor or outdoor applications. Tanks require skids and bands to support round bottom. All tanks are equipped with drain out sumps. Tanks are manufactured from medium-density polyethylene with U.V. Inhibitors and designed for containment of liquids of up to 1.7 specific gravity. Tank walls are translucent for level viewing and equipped with gallon indicators.

### Elliptical Cradle Tanks

Elliptical Tanks can be selected for stationary or transportable applications both indoors and outdoors. The elliptical tank lowers the center of gravity to enhance stability and visibility. The tanks feature a standard 2 1/2" collection sump on the bottom for full drain out. An 8 1/2" deep sump option is available on five sizes. Sump is located directly under the lid on standard tanks, but a center sump option is available on tanks from 500-1250 gallons. These tanks require the bottom to be fully supported with a cradle for use. The tanks are manufactured from medium-density polyethylene with U.V. Stabilizers and are designed for containment of liquids of up to 1.7 specific gravity. Tank walls are translucent for level viewing and equipped with gallon indicators.

Tanks

Call for Pricing



23



## Inductor Tanks

Inductor Tanks are selected as supply tanks for indoor or outdoor applications and feature conical bottoms to facilitate liquid drain out. Tanks feature a bulkhead fitting for supply line connection. New "Full Drain" tanks are available with molded in threaded outlet for complete drainage. Tanks require stands to support the conical bottoms. Tanks are manufactured from medium-density polyethylene with U.V. Inhibitors and designed for containment of liquids of up to 1.7 specific gravity. Tank walls are translucent for level viewing and equipped with gallon indicators.

PART#	CAPACITY	DIMENSIONS (DIA X HEIGHT)	STAND PART #	LID	FITTING
+INFD7-15	7 Gallon Full Drain	15 x 21	+INFD7-10-ST	8"	1 1/2" FPT BOSS
+INFD10-15	10 Gallon Full Drain	15 x 25	+INFD7-10-ST	8"	1 1/2" FPT BOSS
+IN0015-19	15 Gallon	19 x 24	+IN15-ST	12"	2" FPT
+INFD15-19	15 Gallon Full Drain	19 x 27	+INFD15-ST	12"	1 1/2" FPT BOSS
+IN0015-19SM	15 Gallon Side Mount	19 x 24	N/A	12"	2" FPT
+IN0030-24	30 Gallon	24 x 30	+IN30/55-ST	12"	2" FPT
+INFD30-24	30 Gallon Full Drain	24 x 33	+INFD30/55-ST	12"	1 1/2" FPT BOSS
+INFD040-30	40 Gallon Full Drain	30 x 34	+INFD40/85-ST	12"	2" MPT BOSS
+IN0055-24	55 Gallon	24 x 42	+IN30/55-ST	12"	2" FPT
+INFD55-24	55 Gallon Full Drain	24 x 46	+INFD30/55-ST	12"	1 1/2" FPT BOSS
+INFD60-30	60 Gallon Full Drain	30 x 38	+INFD40/85-ST	16"	2" MPT BOSS
+IN0085-30	85 Gallon	30 x 43	+IN40/85-ST	12"	2" FPT
INFD85-30	85 Gallon Full Drain	30 x 48	+INFD40/85-ST	12"	2" FPT BOSS
IN0110-30	110 Gallon	30 x 51	+IN40/85-ST	12"	2" FPT
INFD110-30	110 Gallon Full Drain	30 x 56	+INFD40/85-ST	12"	2" FPT BOSS



+Can ship via UPS/FedEx

## Blow Molded Inductor Tanks

Tanks are furnished with a stainless steel clamp on the outlet to secure the fitting of choice. New "Full Drain" tanks are available with molded in threaded outlet for complete drainage. Tanks come with four blow molded legs that are attached directly to the tank with Stainless Steel hardware. Tanks are manufactured from medium-density polyethylene with U.V. Inhibitors and designed for containment of liquids of up to 1.7 specific gravity. Tank walls are translucent for level viewing and equipped with gallon indicators.

PART#	CAPACITY	DIMENSIONS (Diameter x Height)	LID	FITTING
IBFD10-SET	10 Gallon Full Drain	26 x 35	12"	2"
IBFD15-SET	15 Gallon Full Drain	26 x 39	12"	2"
IBFD20-SET	20 Gallon Full Drain	26 x 44	12"	2"
IBFD35-SET	35 Gallon Full Drain	32 x 49	12"	2"
IBFD60-SET	60 Gallon Full Drain	32 x 62	12"	2"

\*Part# 12695: Leg Anchor Kit for Blow-Molded Tanks (sold separately)



Owensboro, KY  
270.684.4202

Russellville, KY  
270.725.8948

Greensburg, IN  
812.222.1220

Mt. Vernon, IL  
618.847.0283



## Manifold Inductor Kits

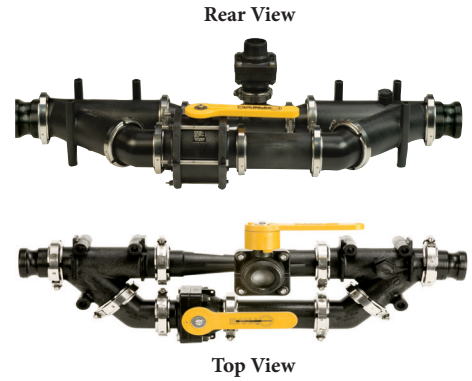


Front View w/ Tank

- Installed after pump
- Suction completely empties Inductor Tank
- Venturi prevents back-flow
- 2" & 3" Full Port flow
- Easy assembly/installation with Manifold Connections
- Only run clean water through pump

PART#	DESCRIPTION
MIS220AAK	2" Full Port Inductor Kit
MIS300AA	3" Inductor Kit

\* Assembly instructions and part list included in kit



Rear View

Top View

## Inductor Tank Components



55270-3/4-18-PO

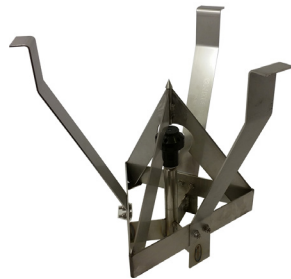


JR-24



PC1/2F-36075-PV

PART#	DESCRIPTION
JR-24	Multi Directional Rinser (3/4" FGHT)
55270-3/4-18-PO	360° Tank Rinser (3/4" FPT)
CB0016	Jug Splitting System with Tank Rinse Nozzle (Plumbing Not Included)
PC1/2F-36075-PV	ProClean Container Nozzle and Valve (3/4" FPT)
3371-0019	Jet Agitator and Volume Booster (3/4" MPT) Up to 4 Times the Volume



CB0016



3371-0019

Call for Pricing



25

Tanks

## Blow Molded Spot Sprayer & Applicator Tanks

Spot Sprayer Tanks are designed as portable applicator supply tanks and are equipped with pump and equipment mount inserts. 15 and 25 gallon tanks are equipped with molded in legs to support the tank and band locators for tie down. Tanks mount with bottom inserts. 40 and 60 gallon tanks are designed with injection-molded leg inserts that allow the tanks to be anchored. Tanks are manufactured from linear low-density polyethylene with U.V. Inhibitors and designed for containment of liquids of up to 1.7 specific gravity. Tank walls are translucent for level viewing and equipped with gallon indicators.



PART#	CAPACITY	DIMENSIONS (W x L x H)	LID
SB00015SWS-SPR	15 Gallon	16 x 34 x 13	5"
SB00015SYS-SPR	15 Gallon	16 x 34 x 13	5"
SB00025SWS-SPR	25 Gallon	18 x 36 x 17	5"
SB00025SYS-SPR	25 Gallon	18 x 36 x 17	5"
SB00040SWSS	40 Gallon	24 x 36 x 19	5"
SB00040SYSS	40 Gallon	24 x 36 x 19	5"
SB00060SWSS	60 Gallon	24 x 36 x 26	5"
SB00060SYSS	60 Gallon	24 x 36 x 26	5"



- W indicates white and Y indicates yellow
- SPR indicates spring loaded vent cap
- Other tank and sump options available
- All tanks can ship via UPS/FedEx

## Rectangle Tanks

PART#	CAPACITY	DIMENSIONS (W x L x H)	LID
SP0005-RT	5 Gallon	7 x 15 x 14	5"
SP0007-RT	7 Gallon	7 x 12 x 14	5"
SP0016-MM	16 Gallon	11 x 11 x 15	5"
SP0012-RT	12 Gallon (Bottom Sump)	11 x 11 x 20	5"
SP0020-LC	20 Gallon (Bottom Sump)	13 x 13 x 21	8"



- Other tank and lid options available
- All tanks can ship via UPS/FedEx

## Rinse Tanks

PART#	CAPACITY	DIMENSIONS (W x L x H)	LID
SPMB2.5-RT	2.5 Gallon	7 x 15 x 14	5"
SPBM003-RT	3 Gallon	7 x 12 x 14	5"
SP003.5-CL	3.5 Gallon (Cylinder)	11 x 15	5"
SPBM04-SQ5	4 Gallon	11 x 11 x 15	5"
SPBM05-SQ5	5 Gallon	11 x 11 x 20	5"
SP0010-SQ8	10 Gallon	13 x 13 x 21	8"
SP0015-SQ8	15 Gallon	16 x 16 x 23	8"



- Other tank and lid options available
- All tanks can ship via UPS/FedEx



Owensboro, KY  
270.684.4202

Russellville, KY  
270.725.8948

Greensburg, IN  
812.222.1220

Mt. Vernon, IL  
618.847.0283

# Tank Lids



PART#	DESCRIPTION
10631	2" Spin-on Kelch Cap
13696	5" Threaded Lid w/Vent
13709	5" Threaded Lid w/2-Way Step Vent
10525	8" Threaded Vented Lid & Ring
10526	12" Threaded Non-Vented Lid & Ring
10527	12" Threaded Vented Lid & Ring
10528	16" Threaded Vented Lid & Ring
10530	22" Threaded Vented Lid & Ring
10520	Breather Only (for 8" & 12" lids)
10529	Breather, 4" Center (for 16" lid)
19024	Outlet Cap - 3/4"
19025	Tether for Outlet Cap
10960	Gasket for Outlet Cap

PART#	DESCRIPTION
3522100-1	6" Solid Lid with Ring
3522120	8" Solid Lid
3522221-1	8" Lid with Ring (Labyrinth Breather)
3522140-1	12" Lid with Ring (Labyrinth Breather)
3522140	12" Lid (Labyrinth Breather)
TL16-0007	180° Hinged 16" (Labyrinth Breather)
TL16-0006	180° Hinged 16" (Bullet Breather)
3522160-1	16" Solid Lid with Ring
3522160	16" Solid Lid
3522060-1	16" Lid with Ring (Labyrinth Breather)
3522060	16" Lid (Labyrinth Breather)

Call for Pricing



27

Tanks





**6" Solid Tank Lids**



PART#	DESCRIPTION	Gasket
TL650S	6" Solid Tank Lid w/Gasket	Santoprene
TL650E	6" Solid Tank Lid w/Gasket	EPDM

**6" Tank Lids W/Vented 2" Plug**



PART#	DESCRIPTION	Gasket
TL652S	6" Tank Lid w/Vented 2" Plug w/Gasket	Santoprene
TL652E	6" Tank Lid w/Vented 2" Plug w/Gasket	EPDM

**6" Tank Lids W/Unvented 2" Plug**



PART#	DESCRIPTION	Gasket
TL651S	6" Tank Lid w/Unvented 2" Plug w/Gasket	Santoprene

**5 1/2" Spray Tank Lids**



PART#	DESCRIPTION
TL600C	5 1/2" Vented Tank Lid

**10" Vented Tank Lids**



PART#	DESCRIPTION
TLVA10	10" Vented Tank Lid & Ring Assembly (New Style)
TLA10	10" Vented Tank Lid & Ring Assembly (Old Style)
TLV10R	10" Vented Tank Lid Assembly w/o Ring
TLV1	Vent Cover
TLV2	Center Vent
TR10R1	10" Tank Ring Only

**Poly Siphon Tubes**



PART#	DESCRIPTION
ST200	2" Poly Siphon Tube
ST300	3" Poly Siphon Tube

**Tanks**

