

Owensboro, KY

270.684.4202

Russellville, KY

270.725.8948

Greensburg, IN

812.222.1220

Mt. Vernon, IL

618.847.0283

Foam, Cleaner, & Dyes

XMark Premium Foam Concentrate

Generates long lasting foam under the widest range of conditions, including water hardness and high temperatures. X-MARK is dye tolerant and contains optical brighteners for increased visibility.

Features & Benefits:

- Lasts longer under tough conditions
- No softening agent needed
- Optical brighteners for high visibility
- Dye tolerant
- Freeze/thaw stable makes storage easy
- Nonflammable for increased safety



Tracer Hot Pink Marking Foam Colorant

Tracer Hot Pink increases marking foam visibility in drilled crops and heavy residue situations where optical clarity of white foam is limited.

Features & Benefits:

- High-impact color leaves a mark on foliage even if foam won't
- Well-suited for postemerge, drilled soybeans
- Highly visible in light-colored soils
- Improves visibility in bright sunlight
- Easy-to-use flip top lid
- Use on all dyes, 2 oz. dosing increments with view strip



Knockdown Foam Suppressant

Foam suppressant designed to quickly defoam spray solutions containing nonionic surfactants, silicone surfactants or crop oil concentrates.

Features & Benefits:

- General purpose antifoamer and defoamer
- Prevents foam spillover
- Easy-to-use flip top lid and 2 oz. dosing increments with viewstrip on quart containers



Super Signal Blue Spray Pattern Indicator

Concentrated blue spray pattern indicator provides temporary visibility of spray applications.

Features & Benefits:

- Concentrated formulations means less product to handle and store
- Single-dose quarts reduce risk of staining during mixing and handling
- Optimizes spray accuracy
- Temporary color dissipates with moisture or sunlight
- Nontoxic



Incide-Out Spray Tank Cleaner

Liquid spray tank cleaner emulsifies and bonds pesticide residues to rinse water for complete purging.

Features & Benefits:

- DuPont and Syngenta approved
- Won't plug screens and nozzles like dry tank cleaners
- Penetrates residue buildup
- Antiredeposition aids improve cleanout
- Contains corrosion inhibitors to protect equipment
- Low-use rates



Direct Drift Retardant

Drift retardant reduces drift risk and maximizes pesticide performance by binding ultra-small spray particles into larger droplets.

Features & Benefits:

- Refined use rates for fewer mixing errors
- Low "phaseout" formulation means longer shelf-life
- The easiest to use liquid drift retardant
- Can be used with Roundup WeatherMAX when tankmixing with 17 lbs/100 of AMS



True Blue EZ SoluPak Pond Dye

Proprietary blend of environmentally friendly, nontoxic dyes reduces sunlight penetration and imparts a natural blue color. Waterproof, foil-lined SoluPak prevents accidental staining.

Features & Benefits:

- Natural blue coloring
- Unique packaging eliminates risk of staining during handling
- Each overpack is fully labeled to prevent misapplication
- No irrigation or recreational restrictions
- Nontoxic



Incide-Out Spray Tank Cleaner

Liquid spray tank cleaner emulsifies and bonds pesticide residues to rinse water for complete purging.

Features & Benefits:

- Advanced surfactant system that penetrates and removes dried on residues left behind from incompatible tank mixes
- Emulsifier technology designed to solubilize oily residue build-up for easier purging of the system
- Anti-corrosion inhibitors to protect equipment pumps, seals and plumbing



Spray Components

Call for Pricing



93

Foam Marker Accessories



Foam Marker Boots



FM900F



1056-42

PART#	DESCRIPTION
1056-42	2" HD Foam Marker Boot
FM900F	3" Foam Marker Boot (Pair)
FM9004	Heavy Foam Marker Boot

Foam Mixing



FM100A



FM100A-ST



FM900S

PART#	DESCRIPTION
FM100A	2" HB Elbow Foam Chamber
FM100A-ST	1 1/4" FPT Straight Foam Chamber
FM900S	Foam Marker Sock

Calibration Jugs



Quickly and easily measures the amount of liquid being dispersed through spray nozzles, and calculates application rates. Can also be used to adjust nozzle flow rates, determine nozzle accuracy, and evaluate line pressure losses.



QC02
64 oz Jug



PART#	DESCRIPTION
9950-0022	32 oz/1000 ml Jug
9950-0025	64 oz/ 2000 ml Jug
9950-0023	128 oz/ 4000 ml Jug



116000-1
5 Gallon Jug



Owensboro, KY
270.684.4202

Russellville, KY
270.725.8948

Greensburg, IN
812.222.1220

Mt. Vernon, IL
618.847.0283



Spray Calibrators

SpotOn SC-1 & SC-4

Accurately check the flow rate of individual sprayer nozzles in just seconds with these calibrators! By obtaining the true flow rate, you can avoid costly over or under application of chemicals and also identify worn spray nozzle tips that need to be replaced.

SC-1 is best for flow rates below 1 GPM, including spray tips for herbicide & insecticide application. Accuracy: $\pm 2.5\%$

SC-4 is best for rates between 1 to 4 GPM to check liquid fertilizer, irrigation, and sprinkler nozzle flow rates. Accuracy: $\pm 4\%$

Features:

- Simple waterproof design has no moving parts
- Shows readings in either GPM, oz/min, or Liter/min
- Easy one handed operation
- Small size stores in cab, tool box, or handbag
- Clear design allows for easy cleaning and trouble shooting



SC-1
23890



SC-4
24200



Digital Pressure Tester

Features:

- Digital display reads PSI, Bars, or kPa
- Uses industry quick connects
- One button operation
- Shockproof rubber covering

28040



Tip Cleaner & Multi-Tool Combo

Features:

- 4-in-1 tip tool
- 50 PSI air blast for cleaning debris from spray tips

27860

Spray Components

Call for Pricing



95

Spray Guns



17" Adjustable Pattern

- 25 GPM Max; 1200 PSI Max
- 17' Reach @ 6 GPM & 850 PSI
- 44' Reach @ 10 GPM & 850 PSI
- 1/2" MPT inlet
- Locking spray grip

3381-0010



21" Adjustable Pattern

- 30 GPM Max; 1200 PSI Max
- 21' Reach @ 6 GPM & 850 PSI
- 57' Reach @ 10 GPM & 850 PSI
- 1/2" MPT inlet
- Locking spray grip

3381-0011



Pistol-Grip 7" Adjustable Pattern

- 10 GPM Max
- 700 PSI Max
- 1/2" MPT inlet
- Locking spray grip

3381-0013



21" Adjustable Pattern Spray Wand

- 1 GPM Max
- 60 PSI Max
- 3/8" & 1/2" Brass HB Inlet

3381-0021



7 1/4" & 18" Adjustable Pattern

- 4.5 GPM Max
- 600 PSI Max
- 3/8" and 1/2" Inlet Hose Barbs

7 1/4" **3381-0043**

18" **3381-0043L**

Hose Nozzles



FNB1505

1 1/2" Adjustable
Hose Nozzle



GHN075

3/4" FHT Adjustable
Hose Nozzle



978-11090

3/4" FHT 3 Pattern
Power Spray
Hose Nozzle



Owensboro, KY
270.684.4202

Russellville, KY
270.725.8948

Greensburg, IN
812.222.1220

Mt. Vernon, IL
618.847.0283



Spray Guns & Tips

AA30 GunJet

AA31-1/4F



4688
Trigger Valve



AA30L-22425



AA30-1/4

- Maximum operating pressure of 500 PSI
- Comfortable palm fitting gun
- For use with any TeeJet spray tip
- 1/4" NPT inlet connection
- Forged brass body and nickel-plated steel trigger
- Teflon® valve seat and packing, stainless steel stem
- Weighs 12 ounces (0.34 kg)

- Maximum operating pressure of 250 psi (17 bar) with flow rates up to 5 gpm (19 l/min)
- Outlet connection is 11-16"-16 TeeJet thread
- Body and trigger molded of tough nylon
- When used with extension, the valve stem extends through the entire extension length for drip free shutoff immediately behind the spray tip
- Accommodates all interchangeable TeeJet spray tips

AA43 GunJet

Designed and built for heavy duty service. Stem extends through extension to valve seat located directly behind orifice disc for drip free shutoff and instant operating response.

Convenient trigger-lock for continuous spraying.

- Number AA43L for operating pressures up to 200 PSI
- Number AA43H for operating pressures up to 800 PSI
- Trigger handle control: ALL MODELS have 1/2" NPT or BSPT (F) inlet connections
- Exposed packing nut for easy adjustment of packing
- Available in aluminum and brass



AA43LA



AA43L

38720 TriggerJet Tips



PART#	COLOR	PSI	THROW
38720-PPB-X8	Gray	0.74	38'
38720-PPB-X12	Brown	1.1	41'
38720-PPB-X18	Orange	1.4	42'
38720-PPB-X20	Blue	1.9	40'

5500 Conejet Tips



PART#	COLOR	PSI	THROW
5500-PPB-X3	Yellow	0.37	31'
5500-PPB-X5	Green	0.58	35'
5500-PPB-X6	Red	0.71	36'
5500-PPB-X8	Gray	0.90	38'
5500-PPB-X12	Brown	1.3	41'
5500-PPB-X18	Orange	1.9	42'
5500-PPB-X22	White	2.3	42'

Call for Pricing



97

Spray Components

Spray Guns

22650 TriggerJet



22650-PP

The 22650 TriggerJet spray gun is a lightweight spray gun designed for use with backpack, canister or other low pressure sprayers. The TriggerJet is made of molded polypropylene for excellent chemical resistance and durability.

- Choice of 1/4" or 3/8" hose shank and 1/4" NPT or BSPT (F) thread inlet connection
- Replaceable diaphragm made of Viton
- Trigger lock permits locking gun in an open position for continuous flow (optional)
- Maximum operating pressure of 150 psi (10 bar)
- Accepts all standard TeeJet spray tips and tip strainers.

22670 TriggerJet



22670-PP-15

The 22670 TriggerJet spray gun kit combines the 22650 TriggerJet spray gun with an extension wand and the items listed below.

- Maximum pressure rating of 150 psi (10 bar)
- 22650 TriggerJet spray gun with choice of 1/4" or 3/8" hose shank and a 1/4" NPT or BSPT (F) thread inlet connection
- Trigger lock permits locking gun in an open position for continuous flow (optional)
- 22665 extension wand with choice of 15" (381 mm) or 24" (610 mm) lengths
- 38720-PPB-X8 adjustable ConeJet® spray tip with Viton® O-ring
- CP22673-PP 45° and CP22664-PP straight adapters (other capacities available)
- Accepts all standard TeeJet spray tips and strainers

50800 TriggerJet



50800-PP

The 50800 TriggerJet spray gun is a lightweight spray gun designed for use with backpack, canister or other low-pressure sprayers. The TriggerJet is made of molded polypropylene for excellent chemical resistance and durability.

- Available with 15" (381 mm) polypropylene or 21" (533 mm) aluminum extension wand
- Available with 38720-PPB-X18 or X26 adjustable ConeJet® tips with a 30° offset
- Trigger lock permits locking gun in an open position for continuous flow
- Maximum operating pressure of 100 psi (7 bar)
- 1/4" or 3/8" hose shank connection
- Approximate max. hose O.D. - 1/2" (13 mm)
- Polypropylene strainer located inside handle to prevent tip clogging

AA18 GunJet Twist Handle

- 20" (508 mm) barrel length
- 1/4" (F) NPT or BSPT inlet connection
- Aluminum material (also available in brass)
- Weighs only 1 pound (0.45 kg) – aluminum version
- Adjustable spray pattern – solid stream to hollow cone
- Twist handle adjustment of spray pattern
- Fits all standard size TeeJet tips

AA18-AL



AA143 GunJet

- Length 22-1/4"
- Weight 1-1/4 pounds
- Constructed of aluminum
- Inlets are available with 3/4" or GH (garden hose) female threads

AA143-AL



Owensboro, KY

270.684.4202

Russellville, KY

270.725.8948

Greensburg, IN

812.222.1220

Mt. Vernon, IL

618.847.0283



Spray Guns



Adjustable Jet Spray Gun

- 2.5mm Nozzle
- 800 PSI Max
- 1/2" FPT inlet
- Teflon Seals

1700-02-013



7" Adjustable Pattern Spray Gun

- 15 GPM Max
- 400 PSI Max
- 3/8" hose barb inlet
- Quick pattern adjustment lever
- Locking Spray Grip

SG-2200



21" Adjustable Pattern Spray Gun

- 25 GPM Max
- 850 PSI Max
- 1/2" hose barb inlet
- Locking spray grip

SG-3200



7 1/4" Adjustable Pattern Spray Gun

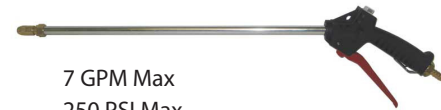
- 8 GPM Max
- 900 PSI Max
- 1/2" FPT inlet

1700-02-013



- 7 GPM Max
- 350 PSI Max
- 3/8" FPT inlet
- Brass valve
- Adjustable nozzle
- Available in 9', 18", & 24"

SG-5518



- 7 GPM Max
- 250 PSI Max
- 3/8" hose barb inlet
- Brass valve
- Locking spray grip
- 18" barrel
- Adjustable nozzle

SG-2218-18

Boomless Nozzles



Description	Part #
2 GPM	
16' Full Spray	BN2BP125FWX-CS
8' Left Spray	BN2BP088LSX-CS
8' Right Spray	BN2BP088RSX-CS
3 GPM	
22' Full Spray	BN2BP152FWX-CS
11' Left Spray	BN2BP116LSX-CS
11' Right Spray	BN2BP116RSX-CS

Hamilton Boomless Nozzles



- Sprays strip up to 56' wide. #05 **400-65401**
- Provides even, thorough spray distribution. Nozzle is fitted with two caps: one for 180° and one for 90°. #10 **400-65411**
- #20 **400-65431**

Call for Pricing



99

Spray Components



Boomless Kits



Dual Nozzle



Single Nozzle

2 GPM nozzle
16' spray pattern
Available in single and dual nozzle

Single **SSBK-NB-2**
Dual **SSBK-DNB-2**



2 GPM nozzle
16' spray pattern
SSBK-SNB-2

*Kits include: valve, bracket, boomless nozzle, hose, gauge, & pressure relief valve

Boom Kits



7' & 10' Booms

2 Nozzle 3 Nozzle
7' Spray Pattern 10' Spray Pattern

SSBK-7FB **SSBK-10FB**



14' Folding Boom

14' Spray Pattern
40" Spacings
3 GPM

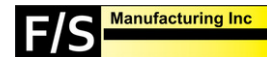
SSBK-14FB



12' Deluxe Boom

7 No Drip Fan Nozzles/3 GPM
3 Section Control
Wet Boom Design
Folding Boom
Quick Exchange Nozzle Bodies

SSBK-12FB-DX



F/S Heavy Duty Booms

20" Spacing
No drip nozzle bodies

12' **BOOM12**
18' **BOOM18**



Spray Components



Owensboro, KY

270.684.4202

Russellville, KY

270.725.8948

Greensburg, IN

812.222.1220

Mt. Vernon, IL

618.847.0283



Tank Frames & Mounts



40 & 60 Gallon Tank Skid

Fits 40 & 60 gallon spot sprayer tanks

32-100060



3-Point Hitch Frame

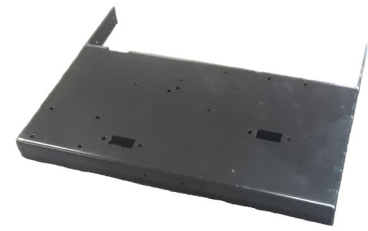
Fits 40 & 60 gallon tanks

Category 1 hitch

Boom ready

Must purchase tank skid to
mount tank

SSFK-4060S3B-MM



Skid Extension

Used to mount gas engines &
pumps

For 40 & 60 gallon skid/utv units

32-101000

Hose Mounts



Skid Hose Reel Kit

HR-75 hose reel & riser frame

Fits 40 & 60 gallon skid/utv units

SSFK-4060HRSU



3-Point Hose Reel Kit

HR-75 hose reel & riser plate

For 40 & 60 gallon 3-point units

SSFK-4060HR3



Position Post

Roll up small lengths of hose
Mounts to 40 & 60 gallon skid

32-100051

Boom Mounts



ATV Boom Mounting Kit

Secures to the bottom of a spot
sprayer tank

Includes two ratchet straps to secure
tank to ATV rack

SSFK-ATV-QA



Skid Boom Mounting Kit

Mounts to 40 & 60 gallon skid

Used for skid/utv units and trailers

SSFK-4060UTV-MM



F/S Receiver Mount

Mount booms on receiver hitch

ATVRM

Call for Pricing



101

Spray Components

Trailer Kits



15 & 25 Gallon Trailer Kit
Fits most 15 & 25 gallon spot sprayer tanks
10" pneumatic tires
SSFK-1525



15 & 25 Gallon New Direction Trailer Kit
Fits most 15 & 25 gallon spot sprayer tanks
10" pneumatic tires
Adjustable width
Compact storage position
Includes rear boom mounting bracket
SSFK-1525ND



40 & 60 Gallon Trailer Kits
Axle & tongue assembly
40 gallon kits have bushing bearings and 15x6-6 tires
60 gallon kits have four bolt hubs, roller bearings, and 16x6.5-8 tires
Must be used with 40 & 60 gallon tank skid
40 Gallon Kit SSFK-4000SL-MM
60 Gallon Kit SSFK-6000SL-MM

Miscellaneous Items



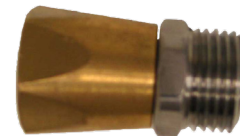
Switch Kit 8' Wire ON/OFF Switch CIG
33-103260-CSK

Nylon Inlet Strainer

3/8" 33-103121
1/2" 33-103122



1/2" Brass Swivel SW-12BS



Switch Kit 10' Wire ON/OFF Switch
33-103233-CSK

1/2" Cross w/ 1/4" Gauge Port GCR1214-BN



1/2" Tee w/ 1/4" Gauge Port 3GTT1214



Backpack Sprayers

4 Gallon Solo Backpack Sprayer

865-425

- 4 gallon tank capacity
- 4.25" opening
- Shut-off valve and 28" wand
- 4' high pressure hose
- Padded shoulder straps
- Viton Seals
- 90 PSI max



4.23 Gallon Master Backpack Sprayer

- Conical, dual conical, flat fan, and 4-hole tips included
- Wide-mouthed tank lid
- Built-in carry handle
- Lever action piston pump
- Wand clips to side of tank
- Ergonomical design
- Padded shoulder harness
- Built-in strainers and screens
- Viton seals

BPS-405



4 Gallon ProPack Rechargeable Backpack Sprayer

- Sprays up to 120 gallons on a single charge
- Variable speed controller
- Wand with adjustable nozzle
- Ergonomical design
- Padded shoulder harness and back pad
- Viton seals



SAS600

Garden Sprayers

9 Gallon Master MFG 12V Rechargeable Cart Sprayer

- 2 hour run time on single charge
- Front nozzle mounted w/ 50" swath
- Spray gun and hose included
- 18' vertical & 20' horizontal spray
- Includes hitch bar for towing
- Adjustable handle for easy storage



PCD-E3-009B-MM



2.1 Gallon Handheld Sprayer

- General purpose C5 pressure sprayer
- Use in and around the garden
- Max Pressure: 55 PSI
- 2 Fully adjustable nozzles
- Trigger wand with lock



SC90.700.008

Spray Components

Call for Pricing



103

Field Ready Sprayers

We can build any combination of sprayer you need.



15, 25, 40, & 60 Gallon
Spot Sprayers



15 & 25 Gallon Trailer Sprayers



40 & 60 Gallon Trailer Sprayers



40 & 60 Gallon 3PT Sprayers



40 & 60 Gallon Skid Sprayers



Owensboro, KY
270.684.4202

Russellville, KY
270.725.8948

Greensburg, IN
812.222.1220

Mt. Vernon, IL
618.847.0283



1. Select Sprayer

F/S Homestead 3Pt Sprayer

- Category I or II Hitch
- Hypro Cast Iron PTO Roller Pump
- Hose Reel and Spray Wand
- TeeJet Manual Controls
- 4 Point Stand
- 1 Year Sprayer Warranty

- 110 Gal **HOMESTEAD-HD110**
- 150 Gal **HOMESTEAD-HD150**
- 200 Gal **HOMESTEAD-HD200**



200 Gal. with 30' Boom



F/S 100 Gal ATV Skid Sprayer*

7 GPM Electric Pump
ATV100E

4 HP Honda w/ 22.5 GPM Centrifugal Pump
ATV100

*Equipped for 12' or 18' Boom

2. Select Boom



F/S Heavy Duty Booms

- 20" Spacing
- No drip nozzle bodies

- 12' **BOOM12**
- 18' **BOOM18**
- 20' **BOOM20**
- 30' **BOOM30**

Spray Components

Call for Pricing



105

Hose Reels



Super Reels

- Heavy Duty Construction
- 12v motor with hand control
- Manual crank handle included
- Guide tubes for easy retrieval
- Manual clutch lockout for easy pull-out
- 2-way wireless and manual switches
- Stainless steel swivel



PART#	Description	Hose Capacity
HR100/HRE100	1" Hose Reel	500' of 1/2" Ag Hose or 100' of 1" Bumblebee
HR200/HRE200	2" Hose Reel	75' of 2" Bumblebee
HR300/HRE300	3" Hose Reel	75' of 3" Bumblebee

*E indicates electric hose reel



Hose Reels

- 3000 PSI Max
- 160 °F Max
- Swivel included

PART#	Hose Capacity
HR-75	75' of 3/8" Hose
HR-100	100' of 3/8" Hose

Agricultural Fluid Gauges

Model 24 Single Scale Service Gauges



These gauges are designed for use with gas, oil, and water or any medium not corrosive to brass or bronze.

- Movement** Brass
- Bourdon Tube** C-Shaped in copper alloy up to 600 PSI and Helical in phosphor bronze above 600 PSI
- Pointer** Black enameled aluminum
- Case Material** ABS standard, black steel optional
- Dial** White aluminum
- Bezel** Black
- Connection Size** 1/4" MNPT
- Accuracy** ASME/ANSI B40.1 Grade B (3-2-3%)
- Fill Material** Dry Only
- Wetted Parts** Copper Alloy

PART#	SIZE	PSI	LM
1124DAB60	2"	0-60	1/4"
1124DAB100	2"	0-100	1/4"
1124DAB160	2"	0-160	1/4"
1124DAB200	2"	0-200	1/4"
2124DAB60	2 1/2"	0-60	1/4"
2124DAB100	2 1/2"	0-100	1/4"
2124DAB160	2 1/2"	0-160	1/4"
2124DAB200	2 1/2"	0-200	1/4"
4124DSB60	4"	0-60	1/4"
4124DSB100	4"	0-100	1/4"
4124DSB160	4"	0-160	1/4"
4124DSB200	4"	0-200	1/4"





Agricultural Fluid Gauges

Model 41 Single Scale Liquid-Filled OEM Gauges



These gauges are designed for any medium not corrosive to brass or bronze. Liquid-Filled gauges are recommended for reducing shock caused by pressure fluctuations or vibration.

- Movement** Brass
- Bourdon Tube** C-Shaped in copper alloy up to 600 PSI and Helical in phosphor bronze above 1000 PSI
- Pointer** Black enameled aluminum
- Case Material** 304 Stainless Steel
- Window** Acrylic
- Dial** White aluminum
- Connection Size** 1/4" MNPT
- Connection Mat.** Brass
- Accuracy** ASME/ANSI B40.1 Grade B (3-2-3%)
- Fill Material** Dry, Glycerine
- Wetted Parts** Copper Alloy

PART#	SIZE	PSI	LM
2141GXB100	2 1/2"	0-100	1/4"
2141GXB160	2 1/2"	0-160	1/4"
2141GXB200	2 1/2"	0-200	1/4"

Model 54 All Stainless Steel Liquid-Filled OEM Gauges



These gauges are designed for any medium not corrosive to stainless steel. Liquid-Filled gauges are recommended for reducing shock caused by pressure fluctuations or vibration.

- Movement** Stainless Steel
- Bourdon Tube** 316 Stainless Steel
- Pointer** Black enameled aluminum
- Case Material** 304 Stainless Steel
- Window** Polycarbonate
- Dial** White aluminum
- Connection Size** 1/4" MNPT
- Connection Mat.** 316 SS
- Accuracy** ASME/ANSI B40.1 Grade B (3-2-3%)
- Fill Material** Dry, Glycerine, Silicone, Florolube
- Wetted Parts** Stainless Steel

PART#	SIZE	PSI	LM
2154GXX100	2 1/2"	0-100	1/4"
2154GXX160	2 1/2"	0-160	1/4"
2154GXX200	2 1/2"	0-200	1/4"
4154GXX60	4"	0-60	1/4"
4154GXX100	4"	0-100	1/4"
4154GXX160	4"	0-160	1/4"
4154GXX200	4"	0-200	1/4"

*Recommended for liquid fertilizer

Spray Components

Call for Pricing



107

Hose & Tubing



L85 EPDM Ag Spray Hose



Applications: For liquid spray units, from hand-held units to large floater spray units handling liquid fertilizer solutions

Tube: High grade EPDM

Reinforcement: Multiple high tensile textile spiral

Cover: Red or black chemical, weather, & ozone resistant EPDM

Temperature Range: -40°F to 180°F

Branding: Goodall L85 AG Spray 150 PSI Max WP

Advantages:

- High-grade EPDM tube and cover
- General applications under moderate operating conditions
- Low pressure water-base agricultural sprays
- Smooth cover
- Light weight

PART#	I.D.	O.D.	LBS/FT	PSI	BEND RADIUS
L85-038	3/8"	0.68"	0.15	150	2.25"
L85-050	1/2"	0.81"	0.20	150	3"
L85-058	5/8"	0.94"	0.24	150	3.75"
L85-075	3/4"	1.125"	0.34	150	4.5"
L85-100	1"	1.375"	0.45	150	7"
L85-125	1 1/4"	1.78"	0.71	150	8.75"
L85-150	1 1/2"	2.03"	0.80	150	10.5"
L85-200	2"	2.50"	1.06	150	14"

*3/8"-1" available in 100' boxes

V3010 Clear Reinforced PVC Tubing



Applications: Multipurpose medium pressure hose for industrial, agriculture, and construction applications

Tube / Cover: Clear, flexible PVC

Reinforcement: Textile spiral reinforcement

Stripe: Ink Print

Temperature Range: -10°F to 158°F

Branding: Goodall V3010

Advantages:

- Non-toxic compound
- Meets FDA requirements
- Glass smooth tube for easy cleaning
- Crystal clear so the media conveyed is always visible

PART#	I.D.	WALL	LBS/FT	W.P.	B.P.
V3010-038	3/8"	0.12"	0.10	325	975
V3010-050	1/2"	0.12"	0.12	225	675
V3010-075	3/4"	0.14"	0.22	175	525

A1661 KurITec Medium Pressure Hose



Applications: Multipurpose medium pressure hose for industrial, agriculture, and construction applications

Tube: PVC/polyurethane blended core

Cover: PVC

Reinforcement: High tensile strength yarn

Temperature Range: 15°F to 160°F

Advantages:

- Abrasion resistant
- Excellent resistance to hydrocarbon-based lawn care and pest control chemicals

PART#	I.D.	O.D.	LBS/FT	W.P.	B.P.
A1661-038	3/8"	0.65"	0.14	325	975
A1611-050	1/2"	0.79"	0.19	225	675





V3500 Sight Gauge Industrial Vinyl Tubing



Applications: For light duty air, water, and chemical service
Construction: Clear Vinyl
Temperature Range: 0°F to 189°F

Advantages:
 • Non-toxic inner tube
 • FDA Approved

PART#	I.D.	WALL
V3500-025	1/4"	1/16"
V3500-038	3/8"	1/16"
V3500-050	1/2"	1/8"
V3500-058	5/8"	1/8"
V3500-075	3/4"	1/8"
V3500-100	1"	1/8"
V3500-125	1 1/4"	1/8"
V3500-150	1 1/2"	1/8"
V3500-200	2"	1/8"

LLDPE Tubing



Linear Low Density Polyethylene plastic tubing (LLDPE) is far superior to any LDPE, yet just as economical. With its superb stress crack resistance, LLDPE plastic tubing is ideal for applications requiring low-temperature flexibility and durability. LLDPE tubing is widely used in transporting air, water, fertilizer, and chemicals.

PART#	I.D.	O.D.	WALL	PSI	COLOR
74205055	1/8"	1/4"	1/16"	358	Black
74205063	11/64"	1/4"	1/25"	205	Black
74205071	3/16"	5/16"	1/16"	268	Green
74205089	1/4"	3/8"	1/16"	214	Black
74205105	3/8"	1/2"	1/16"	153	Black

*100' rolls

*Available in a range of colors

V130 PVC Suction & Discharge Hose



Applications: Water, in industrial and agricultural transfers, as well as light chemical usage

Tube & Cover: PVC

Reinforcement: PVC Helix

Temperature Range: 0 F to 180 F

Advantages:

- Long service life due to vacuum resistance
- Ease of cleaning and handling due to smooth PVC cover
- Kink resistant due to specially compounded PVC helix

PART#	I.D	WALL	LBS/FT	PSI	BEND RADIUS
V130-100	1"	0.11"	0.20	110	4.10"
V130-125	1 1/4"	0.14"	0.31	105	5.10"
V130-150	1 1/2"	0.15"	0.38	95	6.10"
V130-200	2"	0.19"	0.65	110	9.60"
V130-300	3"	0.22"	1.14	90	14.30"

*100' to a roll

300EPDM Suction Hose



Applications: Heavy duty liquid suction hose for use in construction dewatering, liquid waste, cesspool cleaning, septic handling, agricultural applications, and marine use

Tube: EPDM

Reinforcement: Polyethylene helix

Cover: Black chemical, weather, & ozone resistant EPDM with yellow helix

Recommended Fittings: Cam & Groove or short shank

Temperature Range: -40°F to 140°F

PART#	I.D	O.D	LBS/FT	PSI	BEND RADIUS	VACUUM
300EPDM-100	1"	1.34"	0.23	50	1.9"	29.8
300EPDM-125	1 1/4"	1.65"	0.34	50	3.2"	29.8
300EPDM-150	1 1/2"	1.84"	0.40	50	3.2"	29.8
300EPDM-200	2"	2.43"	0.67	50	5.2"	29.8
300EPDM-300	3"	3.52"	1.10	43	7.1"	29.8

•Also available in 2 1/2", 4", & 6"

•100' to a roll

Spray Components

Call for Pricing



109

390SD Kanaflex Suction & Discharge Hose



Applications: All weather suction and discharge hose. Suction and discharge of liquids in the construction, rental and agricultural industries such as agricultural chemicals, liquid fertilizers and dewatering.

Tube : EPDM Rubber
Cover : Textile Fiber
Reinforcement: Polyethylene Helix
Temperature Range: -40°F to 140°F

PART#	I.D	O.D	LBS/FT	PSI	BEND RADIUS	VACUUM
390SD-150	1 1/2"	1.87"	0.50	100	3"	29.8
390SD-200	2"	2.42"	0.73	100	5"	29.8
390SD-300	3"	3.54"	1.25	90	7"	29.8

*100' to a roll

N645 Alligator Wire-Braided EPDM Suction Hose



Applications: General purpose fertilizer solution and water suction hose

Tube: High-grade EPDM/SBR blend

Reinforcement: High tensile textile spiral with steel helix wire

Cover: Black abrasion, oil, weather, & ozone resistant EPDM/SBR blend

Recommended Fittings: Cam & Groove, short shank or King nipples

Temperature Range: -30°F to 195°F

Branding: Goodall N645 Alligator AG; Blue and white Mylar longitudinal stripe

Advantages:

- High-grade EPDM tube and cover
- Heavy duty construction
- Small bend radius

PART#	I.D	O.D	LBS/FT	PSI	BEND RADIUS	VACUUM
N645-150	1 1/2"	2"	0.90	150	6"	27
N645-200	2"	2.5"	1.10	150	8"	27
N645-300	3"	3.5"	1.85	150	12"	27

*100' to a roll

V136 Blue PVC Water Discharge Hose



Applications: Water discharge in low pressure agricultural, industrial, and construction applications

Tube: Black PVC

Cover: Blue PVC

Reinforcement: Polyester Fabric

Temperature Range: -10 F to 150 F

Advantages:

- Longer life due to high adhesions between tube and cover
- More durable due to multi-layer construction
- Ease of cleaning and handling due to smooth PVC cover
- Wider temperature range

PART#	I.D	W.P.
V136-150	1 1/2"	75
V136-200	2"	60
V136-300	3"	50

*More sizes available



Owensboro, KY

270.684.4202

Russellville, KY

270.725.8948

Greensburg, IN

812.222.1220

Mt. Vernon, IL

618.847.0283



NH3 Compatible Hose

N2000 Century Nylon-Braided Anhydrous Ammonia Hose



Applications: Anhydrous Ammonia hose for NH3 Nurse Tank usage
Tube: High grade low permeation EPDM
Reinforcement: Multiple high tensile textile braids
Cover: Black abrasion & weather resistant EPDM with green longitudinal stripe

PART#	I.D	O.D	LBS/FT	PSI
N2000-100-*	1"	1.53"	0.58	350
N2000-125-*	1 1/4"	1.75"	0.67	350
N2000-150-*	1 1/2"	2.12"	0.88	350
N2000-200-*	2"	2.73"	1.31	350

Recommended Fittings: Swaged male pipe thread, interlocking clamp type

Temperature Range: -40°F to 180°F

Branding: Goodall N2000 Anhydrous Ammonia 350 PSI Max WP+ removal date; Embossed longitudinal stripe

Warranty: Pro-rates 6-year warranty

*Desired length in feet **Also available in 3/8", 1/2", & 3/4"

N2595 Stainless Steel-Braided Anhydrous Ammonia Hose



Applications: Anhydrous ammonia hose for NH3 nurse tank and riser usage
Tube: High-grade low permeation chlorobutyl
Reinforcement: High tensile stainless steel wire braids & textile
Cover: Black abrasion & weather resistant neoprene with grey longitudinal stripe

PART#	I.D	O.D	LBS/FT	PSI
N2000-100-*	1"	1.52"	0.69	350
N2000-125-*	1 1/4"	1.84"	0.96	350
N2000-150-*	1 1/2"	2.12"	1.19	350
N2000-200-*	2"	2.74"	1.58	350

Recommended Fittings: Swaged male pipe thread, interlocking clamp type

Temperature Range: -40°F to 180°F

Branding: Goodall N2595 Anhydrous Ammonia 350 PSI Max WP+ removal date; Embossed longitudinal stripe

Warranty: Pro-rates 8-year warranty

*Desired length in feet **Also available in 1/2", 3/4", & 3"

V1180 Visall-Flo EVA NH3 Tubing



Applications: EVA Tubing for NH3, phosphoric acid, ammonia nitrate, NH3 solution, all liquid fertilizers, and most insecticides and pesticides
Construction: Ozone resistant EVA copolymer

PART#	I.D	WALL	WEIGHT	PSI
V1180-038B	3/8"	0.098"	6.25	100
V1180-075B	3/4"	0.125"	13.80	100
V1180-050B	1/2"	0.11"	6.30	125

Temperature Range: Softening point @ 148°F

Packaging: Cardboard reels

Advantages: Excellent permeability, resistance to gas & water vapor, excellent flexibility and toughness in low temperature, meets FDA requirements, black lasts 2X longer than clear

*Available in 100', 250', & 500' lengths

V3020 Cloudy Reinforced EVA Tubing



Applications: Used in a wide variety of applications in ambient and low temperature environments. It is well suited for conducting fertilizer and aqueous based chemical solutions, air, water, and NH3.

Construction: Thermoplastic with textile braid reinforcement

Recommended Fittings: Standard brass, steel, or nylon barbed inserts with outside ferrules, clamps, or screw-in reusable type fittings.

Temperature Range: Softening point 148°F

Advantages: Non-toxic inner tube, high working pressure, long lengths

PART#	I.D	O.D	WEIGHT	PSI
V3020-038	3/8"	0.59"	7.00	250
V3020-050	1/2"	0.72"	8.70	250
V3020-075	3/4"	1.00"	14.00	150
V3020-100	1"	1.31"	23.50	150

Call for Pricing



111

Spray Components