

Owensboro, KY  
270.684.4202

Russellville, KY  
270.725.8948

Greensburg, IN  
812.222.1220

Mt. Vernon, IL  
618.847.0283



## Fuel Transfer Pumps



110300-2

### 110300-2 DC Aluminum Gear Fuel Pump with Auto Nozzle

- 12-Volt DC - Rotary Gear. Explosion Proof Motor.
- Up to 18 GPM (69 LPM)
- 12 ft. (3.7m) x 1 in. Hose
- 2 Year Warranty



137100-01

### 137100-01 EZ-8 DC Fuel Pump

- 12-Volt DC - Rotary Gear. Explosion Proof Motor.
- Up to 8 GPM (30 LPM)
- 10 ft. (3.0m) x 5/8 in. Hose
- 2 Year Warranty



133265-04

### 133265-04 M-3025 High Performance Pump with Auto Nozzle

- 12-Volt DC - Vane
- Up to 25 GPM (95 LPM)
- 18 ft. (5.5m) x 1 in. Hose
- 2 Year Warranty



133200-2

### 133200-2 M-3120-AL AC Fuel Transfer Pump with Auto Nozzle

- 115-Volt AC - Vane
- Up to 20 GPM (75 LPM)
- 12 ft. (3.7m) x 3/4 in. Hose
- 2 Year Warranty



133220-2

### 133220-2 M-3130 Super Heavy Duty Vane Pump with Auto Nozzle

- 115 or 230-Volt AC - Vane
- Up to 30 GPM (114 LPM)
- 12 ft. (3.7m) x 1 in. Hose
- 2 Year Warranty



114000-10

### 114000-10 Dual Flo Hand Pump

- Worlds Highest Flow Portable Hand Pump
- Piston
- 25 Gallons (95 Liter) or 50 Gallon (189 Liter) Settings per 100 Strokes
- 8 ft. (2.5 m) x 3/4 in. Hose
- 2 in. NPT Tank Fitting
- 2 Year Warranty

Call for Pricing



177

Fuel Transfer



### 114000-11 HP-100C Dual Flo Hand Pump

- Worlds Highest Flow Hand Pump
- Piston
- Up to 50 Gallons per 100 Strokes
- 8 ft. (2.5 m) x 3/4 in. Hose
- 2 in. NPT Tank Fitting
- 2 Year Warranty



114000-11

### 129010-1 BP-12 Lever Handle Barrel Pump

- Lever
- Up to 1 pint per stroke
- 2 in. NPT Tank Fitting
- 90 Day Warranty



129010-1

### 131000-1 HP-90 Hand Pump

- Piston
- Up to 25 Gallons (95 Liters) per 100 Strokes
- 8 ft. (2.5 m) x 3/4 in. Hose
- 2 in. NPT Tank Fitting
- 2 Year Warranty



131000-1

### 381 Barrel Pump

- Fits 15 to 55 gallon drums with 2" bung opening
- Recommended for diesel fuel or oil up to 40 weight
- Die-cast zinc piston with 2 brass rings; Buna "N" Seals
- Telescoping steel tube assembly
- Curved discharge with garden hose threads



381

### 129000-1 LP-50 Hand Pump

- Lever
- Up to 1 Pint per Stroke
- 2 in. NPT Tank Fitting
- 90 Day Warranty



129000-1

### 129003-1 RP-5 Hand Pump

- Rotary
- Up to 8 Gallons (30 Liters) per 90 Revolutions.
- 2 in. NPT Tank Fitting
- 90 Day Warranty



129003-1



# **FILL-RITE** Fuel & Oil Transfer Pumps



**FR1210C**



**FR1211C**



**FR310VB**



**FR311VB**



**FR700**



**FR701**

## **1200 Series 12-Volt DC Rotary Vane Pumps**

This industry standard DC pump dispenses up to 15 GPM (57 LPM). The pump weighs less than 27 pounds (12.2kg), with hose and nozzle, and has a draw that's easy on the DC power source.

- Explosion-Proof UL/CUL Listed 1/4 HP Motor with Permanent Magnet and Ball Bearings
- Heavy-Duty Switch, Thermal Overload Protection and Junction Box
- Heavy-Duty Battery Cable
- Iron Rotor
- Automatic Bypass Valve
- Built-In Strainer
- 12' (3.7M) Hose with Static Ground Wire
- Manual Nozzle with Protective Nozzle Boot
- 2" Threaded Base for Tank Openings
- Corrosion-Proof Adjustable Section Pipe
- Machined Carbon Vanes

## **300 Series HD High Flow AC Pumps**

High Flow AC Utility Rotary Vane Pumps with a flow rate few pumps can match, these pumps provide long life and deliver up to 35 GPM (114 LPM).

- Explosion-Proof UL Listed Dual Voltage 3/4 HP Motor
- Motor has Sealed Bearings, Heavy-Duty Switch and Thermal Overload Protection
- Built-In Junction Box
- Cast Iron Pump Housing with Iron Rotor and Carbon Vanes
- Check Valve, Pressure Relief Valve and Strainer Assembly
- Automatic Bypass Valve
- 2" Threaded Bas for Tank Openings
- No Foot Valve Required
- UL/CUL Listed
- Rain Proof

## **700 Series HD AC Utility Pump**

These rugged, positive displacement, economy pumps are UL/CUL listed and deliver flow rates up to 20 GPM (76 LPM).

- Explosion-Proof UL/CUL Listed 1/3 HP Motor (115 Vac-60Hz)
- Heavy-Duty Switch, Thermal Overload
- Protection and Junction Box
- Carbon Vanes and Ceramic/Carbon Seal Reduce wear and Repair Expense
- Integral Check Valve with Pressure Relief on Outlet Side Reduces Pressure Drop and Improves Vertical Lift
- Easy Removable Strainer
- 2" Threaded Base for Tank Openings
- Rain Proof
- No Foot Valve Required
- Automatic Bypass Valve



# FILL-RITE

## 4200 Series High Flow 12 VDC pumps

In a world where time is money, the FR4210 saves you both. Thanks to its high flow rate of 20 GPM (76 LPM) and low 22 Amp draw, you'll spend less time at the pump and more time accomplishing the task at hand.

- Explosion-Proof UL/CUL Listed 1/4 HP Motor with Permanent Magnet and Ball Bearings
- Heavy-Duty Switch, Thermal Overload Protection and Junction Box
- Heavy-Duty Battery Cable
- Iron Rotor
- Automatic Bypass Valve
- Built-In Strainer
- 12' (3.7M) Hose with Static Ground Wire
- Manual Nozzle with Protective Nozzle Boot
- 2" Threaded Base for Tank Openings
- Corrosion-Proof Adjustable Section Pipe
- Machined Carbon Vanes



**FR4210D**

## 400 Series Diaphragm Oil Transfer Pump

Transfers heavy fluids such as lube and gear oils at up to 13 GPM. The unique design combines the function of an air-operated dual diaphragm pump with the convenience of electro-mechanical design.

- 1/4 HP motor with permanent magnet and ball bearings
- Heavy-duty switch, thermal overload protection and junction box
- Reciprocating, spring-driven, dual diaphragm design optimizes flow rate
- Transfers fluid viscosities to 1000+ CPS
- Can also transfer particulate fluids
- Self-priming
- Choice of outlet ports for installation flexibility
- Can be set up to safely transfer other industrial fluids and chemicals



**FR450**

## FR112 Manual Rotary Fuel Hand Pump

Especially effective with medium viscosity liquids, as well as oils, gas and diesel fuels, the rotary action of these easy-to-use pumps allows smooth, continuous transfer at up to 10 GPM per 100 revolutions.

- Lightweight Cast Aluminum Body
- Built-In Check Valve and Strainer
- "Easy Mount" 2" Tank Adapter
- Corrosion-Proof Adjustable Suction Pipe
- Anti-Siphoning Device
- Pump May be Padlocked



**FR112**

## 150 Series 20 Gallon Piston Hand Pump

This compact, high flow, dual-action design delivers up to 20 GPM (76 LPM) per 100 strokes. Lightweight and portable, these pumps meet a full range of applications. Ideal for gasoline, oil or a wide variety of approved liquids.

- Lightweight Cast Aluminum Body
- Stainless Steel Inner Liner
- Corrosion-Proof Adjustable Suction Pipe
- Anti-Siphoning Device



**FR152**





Owensboro, KY  
270.684.4202

Russellville, KY  
270.725.8948

Greensburg, IN  
812.222.1220

Mt. Vernon, IL  
618.847.0283



## Fuel Nozzles



### Automatic Diesel Nozzle

1" NPT, for use with diesel fuel only. Designed for pumps with a minimum flow rate of 20 GPM.



906008-570

### Automatic Unleaded Nozzle

3/4" NPT, straight spout for M-150S, M-180S, M-240S and M-1115S Series.



110121-8

### DEF 3/4" Automatic Nozzle

Viton seals, 3/4" NPT thread with a swivel and a straight spout. Designed to transfer diesel exhaust fluid (Urea) fuels.



906006-83

### Manual Nozzles

PART#	FITTING	SWIVEL
110155-1	3/4" NPT	Yes
110155-4	1" NPT	Yes
906001-506	3/4" NPT	No
906001-10	1" NPT	No



### Automatic Shutoff Nozzles

#### For Heavy-Duty, High-Flow Truck, Bus and Fleet Service

If you operate a full-service truck stop, refuel your own fleet or manage a cardlock refueling location, the low cost, long life and durability of the OPW 7H® high flow nozzle can help increase your productivity, sales and profits.

- Spout retaining ring adds extra measure in securing nozzle spout in fill pipe.
- OPW products are designed to work at 50 PSI maximum pressure.
- Three-position hold-open device - one-finger control of hold-open mechanism means easy setting of flow rate.
- FlowLock™ designed to shut-off automatically when the spout is tipped up, limiting spillage.
- Low reliable shut-off specially designed to ensure proper shut-off as low as 5 gallons per minute.

### Husky Fuel Nozzle

- Automatic shut-off nozzle for farm, 12V skid tank pumps, or larger pumps without air eliminators.
- Husky 1-GS nozzle shuts off - when the gas tank is full.
- Not to be used with gravity tanks. Not legal for retail dispensing.
- Nozzle is equipped with unique Flo-Stop device that shuts off nozzle if it falls from fill tank or raises above the horizontal.
- Inlet size 1" (3/4" reducer bushing optional).



1" Diesel  
045703N-01



1" Gasoline  
045704-01



1" - Green  
7HB-0100



1" - Black  
7HB-0400

Call for Pricing



181

Fuel Transfer

## Mechanical Flow Meters

### 800 Series Flow Meters

Mechanical flow meters that provide precision and durability in a cost-effective design. The Series 800C meter's exclusive unicast component mounting configuration assures consistency, particularly in gravity flow applications. The 800C is accurate to within  $\pm 1\%$ .



**FR807C**

- Large, Easy to Read Register
- Flow Ports Can Be Positioned Vertically or Horizontally
- UL/CUL Listed
- Gallon or Liter Reading
- Handles Fluid of any Viscosity
- Strainer for Gravity-Flow Applications Traps Tank Contaminants

PART#	DESCRIPTION
FR807C	3/4" Flow Meter
FR807C1	1" Flow Meter
FR807CN1	1" Nickel Plated Flow Meter

### 900 Series Flow Meters

Flow Meters Series 900 operates at 6 to 40 GPM (23 to 151 LPM), with accuracy of  $\pm 2\%$ . The easy reset register indicates product use up to 999.9 gallons or 9,999 liters. The master totalizer registers up to 9,999,999 gallons.



**FR901C**

- Large, Easy To Read Numbers
- Measure Fluids at Temperatures up to 150°F and Pressures up to 50 PSI
- Quick Reset Knob
- Flexible Flow Ports can be Positioned Vertically or Horizontally

PART#	DESCRIPTION
FR901C	1" Flow Meter
FR901C1.5	1.5" Flow Meter
FR901CN1.5	1.5" Nickel Plated Flow Meter



## Digital Flow Meters

- Aluminum Fuel Meter
- Accumulative & Batch Totals
- Flow rate 3 to 30 GPM
- 1" FNPT Thread
- Lightweight, accurate, and reliable turbine meter with rugged aluminum housing and sealed electronic circuitry.
- Powered by two easy to replace AAA batteries
- Factory calibrated for petroleum fuel with a choice of gallon and liter measurement.



**113255-1**

- Nylon DEF Flow Meter
- Accumulative & Batch Totals
- Flow rate 3 to 30 GPM
- 1" FNPT Thread
- Powered by two easy to replace AAA batteries
- Factory calibrated for diesel exhaust fluid with a choice of gallon and liter measurement.



**113255-24**



Owensboro, KY  
270.684.4202

Russellville, KY  
270.725.8948

Greensburg, IN  
812.222.1220

Mt. Vernon, IL  
618.847.0283



## Petroleum Fuel Filters

### 200 & 250 Series Spin-On Filters

- 18 GPM Maximum Flow
- 50 PSI Maximum Working Pressure
- Resin-Impregnated Cellulose Media
- Equipped with Draincock (**200 Series Only**)
- Protects Equipment
- Cleaner Change-Out with Draincock Design
- Removes Common Contaminants Such as Dirt, Dust, and Rust
- Ease of Installation with Standard Pre-Lubed Gaskets



PART #	CIMTEK	MICRON	UNF
70002	200E-10	10	3/4"
70046	200E-30	30	3/4"
70004	200AE-10	10	1"
70045	200AE-30	30	1"
70819	250E-02	2	3/4"
70005	250AE-10	10	1 3/8"
70821	250AE-02	2	1 3/8"

### 260HS Series Hydrosorb Spin-On Diesel Filters

- 18 GPM Maximum Flow
- 50 PSI Maximum Working Pressure
- Resin-Impregnated Cellulose Media
- Larger Canister and Longer Element
- Longer Element Life
- Higher Dirt-Holding Capacity
- Removes Common Contaminants Such as Dirt, Dust, and Rust
- Ease of Installation with Standard Pre-Lubed Gaskets



PART #	CIMTEK	MICRON	UNF
70067	260HS-30	30	1"
70066	260AHS-30	30	1 3/8"

### 300 Series Service Station Filters

- 25 GPM Maximum Flow
- 50 PSI Maximum Working Pressure
- MicroGlass Media Offers High
- Dirt-Holding Capacity
- Removes Particulate Contaminants Such as Dirt, Dust, and Rust
- Variety of Media for Different Operating Conditions
- Recognized by the Underwriter's Laboratory for Use with Service Station Pumps
- Cellulose/MicroGlass Media Offers Higher Efficiencies and Longer Life
- Standard Pre-Lubed Gaskets

PART #	CIMTEK	MICRON	UNF
70806	300-02	2	1"
70010	300-10	10	1"
70012	300-30	30	1"



### 300HS Series Hydrosorb Filters

- 25 GPM Maximum Flow
- 50 PSI Maximum Working Pressure
- Hydrosorb Technology
- Designed to Detect Free Water, Emulsified Water, and Filters Particulates
- Monitors Water Content of Storage Tank
- Added Protection to Gasoline Dispenser Meter Chambers
- Ease of Installation with Standard Pre-Lubed Gaskets

PART #	CIMTEK	MICRON	UNF
70059	300HS-10	10	1"



Fuel Transfer

Call for Pricing



183



## 800 Series High Volume Commercial Filters

- 40 GPM Maximum Flow
- 50 PSI Maximum Working Pressure
- Variety of Media for Different Operating Conditions
- Increased Flow Capacity and Extended Life
- Standard Pre-Lubed Gaskets
- Extended Length Provides Higher Dirt-Holding Capacity
- Removes Common Particulate Contaminants at High Flow Rates



PART #	CIMTEK	MICRON	UNF
70019	800-10	10	1 1/2"
70814	800-02	2	1 1/2"

## 800HS Series High Volume HydroSorb Filter

- 40 GPM Maximum Flow
- 50 PSI Maximum Working Pressure
- Variety of Media for Different Operating Conditions
- Increased Flow Capacity and Extended Life
- Standard Pre-Lubed Gaskets
- Extended Length Provides Higher Dirt-Holding Capacity
- Removes Common Particulate Contaminants at High Flow Rates and Dispensers
- Ease of Installation with Standard Pre-Lubed Gaskets



PART #	CIMTEK	MICRON	UNF
70068	800-HS30	30	1 1/2"



## BioFuel Filters

### High Capacity BioFuel Filters

- 25 GPM Maximum Flow
- 50 PSI Maximum Working Pressure
- 1"-12 UNF Threaded Connection
- High Performance MicroGlass Media Designed for Ethanol-Blended Fuels Up to E15
- Filters High Levels of Contaminants While Monitoring For Phase Separation
- High Flow- 25 GPM- Perfect for Split Systems Feeding Two Hoses
- More Than Twice The Life Compared To Filters Using Cellulose Media
- Pre-Lubed Gaskets Included - Easy to Install

PART #	CIMTEK	MICRON	UNF
70117	260MB-10	10	1"
70122	300MB-10	10	1"
70114	400MB-05	5	1 1/4"
70120	400MB-10	10	1 1/4"
70023	450MB-10	10	1"
70111	475XLMB-10	10	1"



**Fuel Transfer**





Owensboro, KY  
270.684.4202

Russellville, KY  
270.725.8948

Greensburg, IN  
812.222.1220

Mt. Vernon, IL  
618.847.0283



## 800 BMG Series BioFuel Filters

- 40 GPM Maximum Flow
- 50 PSI Maximum Working Pressure
- Compatible with Bio-Fuels
- High Performance Media Compatible with Aggressive Solvent Nature of Renewable Fuels
- Removes Common Particulate Contaminants at High-Flow Rates
- Extended Length Provides Higher Dirt-Holding Capacity
- Ease of Installation with Standard Pre-Lubed Gasket

PART #	CIMTEK	MICRON	UNF
70036	800BMG-02	2	1 1/2"



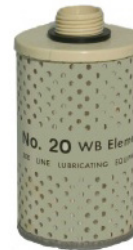
## Fuel Accessories

### Fuel Filter Housings



PART#	FITS	MATERIAL	SIZE
50003	200H	Cast Iron	3/4"
50004	200AH	Cast Iron	1"
50109	800	Aluminum	1"

### Fuel Filter Cartridges



Water-Separating  
NS-10 Filter Element  
20WB



10 Micron  
30002

2 Micron  
30065

### OPW Two-Plane Hose Swivels

- Customer convenience
- Two-plane rotation
- Compact, attractive profile
- Secure design
- Dual seals
- 50 PSI maximum pressure.
- Special swivel outlet design



3/4"  
241TPS-0241

1"  
45-5075

Call for Pricing



185

Fuel Transfer

## Fuel Transfer Hose & Fittings

### L77 Fuel Hose

**Applications:** For discharge of gasoline, grease, kerosene, and petroleum oils from hand pumps to field agriculture equipment (Not UL approved)

**Tube:** Gasoline resistant NBR

**Reinforcement:** High tensile textile spiral

**Cover:** Abrasion and oil resistant black PVC/NBR blend

**Temperature Range:** -30°F to 140°F

**Branding:** IRPCO Fuel Flo

**Advantages:**

- Gasoline-resistant Nitrile (NBR) tube
- Medium oil resistant Neoprene (CR) cover
- Static wire
- Light weight



PART#	I.D.	O.D.	LENGTH
L77-075-10	3/4"	1.125"	10'
L77-075-12	3/4"	1.125"	12'
L77-075-15	3/4"	1.125"	15'
L77-100-10	1"	1.50"	10'
L77-100-20	1"	1.50"	20'
L77-100-30	1"	1.50"	30'

### L45 BioDiesel PumpFlex Fuel Hose

Specifically designed for transfer of soy biodiesel (to 75%) E-85 ethanol, leaded and unleaded gasoline from electric pump to vehicles.

**Tube:** High Grade Gasoline & Diesel Resistant NBR-Grade 3

**Reinforcement:** Four Spirals

**Cover:** Black Fuel, Weather, & Abrasion Resistant

**Fittings:** Male Chromed Brass

**Temperature Range:** -40° F to 180° F

**Pressure Rating:** 3/4" - 200 PSI; 1" - 150 PSI

**Branding:** Size Pump 1, UL c 97, MO, Curb Pump Hose, date code



PART#	I.D.	O.D.	LENGTH
L45-075-10	3/4"	1.125"	10'
L45-075-12	3/4"	1.125"	12'
L45-075-14	3/4"	1.125"	14'
L45-075-16	3/4"	1.125"	16'
L45-075-20	3/4"	1.125"	20'
L45-100-10	1"	1.375"	10'
L45-100-12	1"	1.375"	12'
L45-100-16	1"	1.375"	16'
L45-100-20	1"	1.375"	20'

### Black Merchant Fuel Fittings

#### Bell Reducer



PART#	SIZE
0122-1612	1" x 3/4"

#### Union Coupling



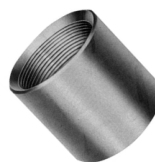
PART#	SIZE
0140-12	3/4"

#### 90 Degree Street Elbows



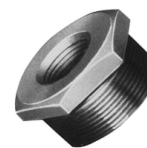
PART#	SIZE
0107-16	3/4"
0107-12	1"

#### Straight Couplings



PART#	SIZE
0119-12	3/4"
0119-16	1"

#### Schedule 40 Hex Bushings



PART#	SIZE
0128-1612	1" x 3/4"
0128-2416	1 1/2" x 1"

#### Schedule 40 Close Nipples



PART#	SIZE
4376-1201	3/4"
4376-1601	1"



Owensboro, KY  
270.684.4202

Russellville, KY  
270.725.8948

Greensburg, IN  
812.222.1220

Mt. Vernon, IL  
618.847.0283



**Dura DEF Products  
2 Year Warranty**

## DURA DEF Portable Tote

- Easy Caddy Pumping System
- Top or Bottom Suction
- 135 Gallon DEF Tote
- 12 Volt DC Motor or 110 Volt AC Motor
- 6" Dual Bung Lid
- Micro Matic RPV Valve
- 20' Def Hose
- Choice of Nozzle
- Meter Optional



### Top Suction

PART#	NOZZLE	MOTOR
DEFE-2512ME-135	Manual	12V
DEFE-2515ME-135	Manual	110V
DEFE-2512AE-135	Auto	12V
DEFE-2515AE-135	Auto	110V



### Bottom Suction

PART#	NOZZLE	MOTOR
DEFE-2012ME-135	Manual	12V
DEFE-2015ME-135	Manual	110V
DEFE-2012AE-135	Auto	12V
DEFE-2015AE-135	Auto	110V

## DEF Dispension System



### 2" NPT Bung

PART#	NOZZLE	MOTOR
DEFT-2012ME	Manual	12V
DEFT-2015ME	Manual	110V
DEFT-2012AE	Auto	12V
DEFT-2015AE	Auto	110V

- No Meter
- 20' Def Hose
- All Clamps and Fittings

- Telescoping Down Tube
- Micro Matic RSV Coupler-Optional

### RSV Type Valve

PART#	NOZZLE	MOTOR
DEFT-2412ME	Manual	12V
DEFT-2415ME	Manual	110V
DEFT-2412AE	Auto	12V
DEFT-2415AE	Auto	110V



DP-N4001



DP-30000

Fuel Transfer

Call for Pricing



187